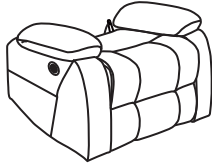


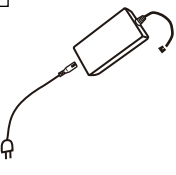

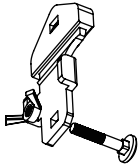
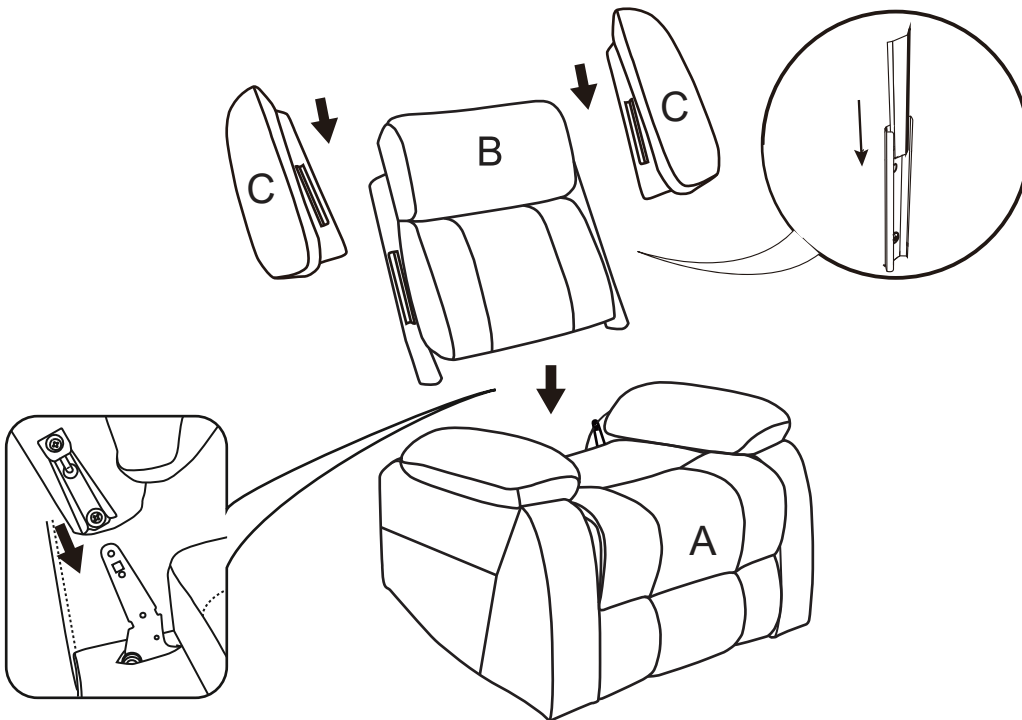


Assembly Instruction

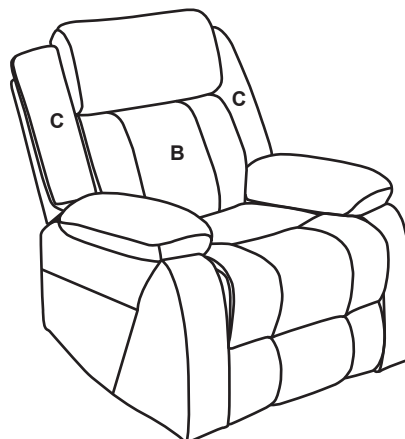
					
Chair base	Backrest	Left ear& Right ear	Power Source	Remote control	Anti-fall bracket x2

■ Step 1

1. Insert chair back(B) to the chair base(A), make sure the slots on the back fully assembled to the bottom part.



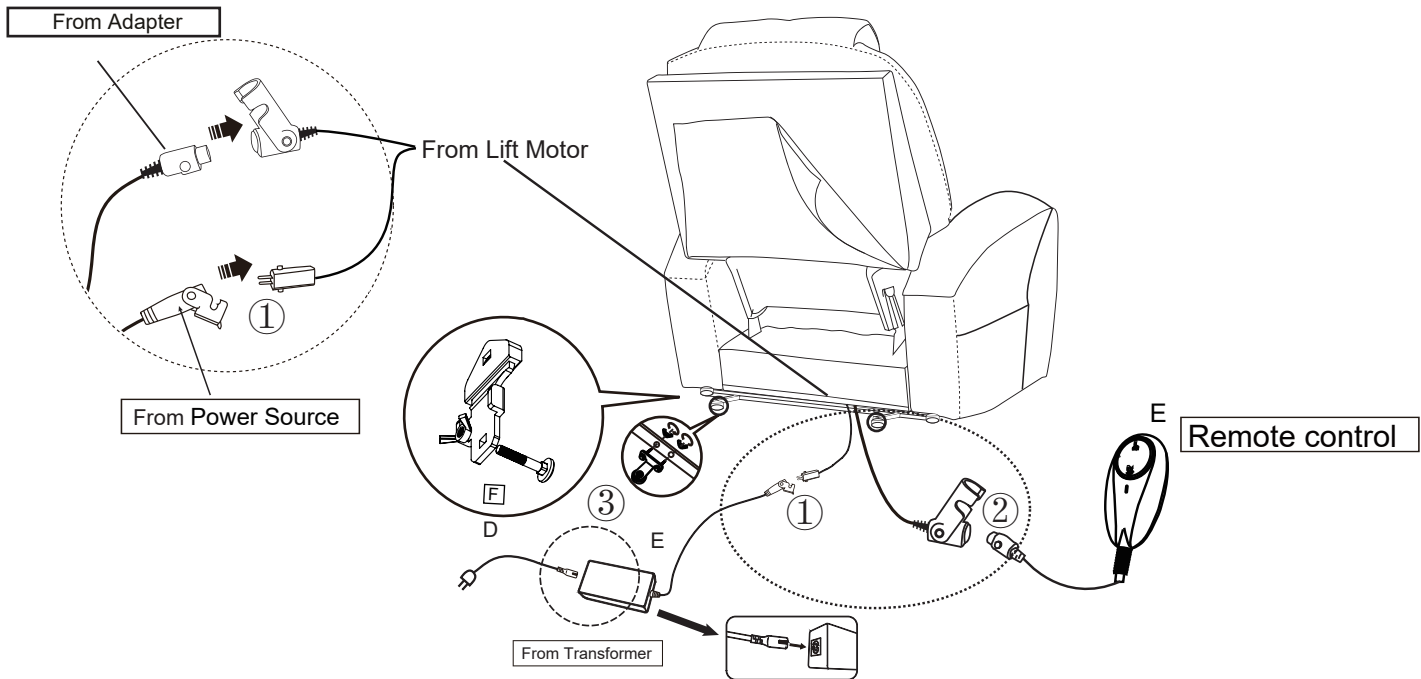
2. Insert the left and right ears into the backrest, making sure the slots are fully assembled to the bottom.



Assembly Instruction

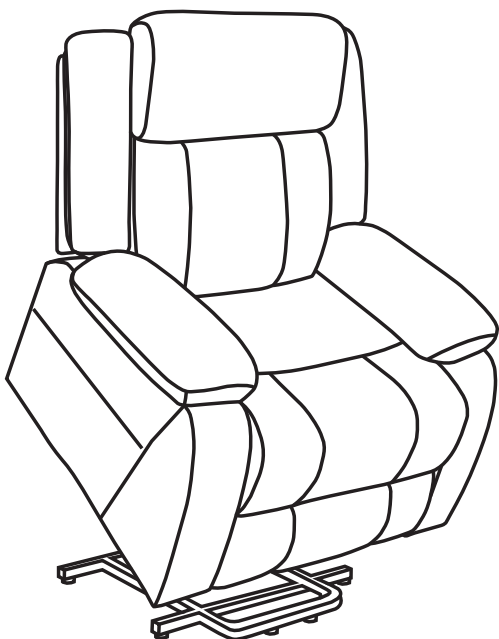
■ Step 2

- ① wire connect the motor and power source (E).
- ② wire connects with the motor and remote control(D).
- ③ Please install two Anti-fall bracket (F) on the mechanism.



■ How to use the Remote?

Light on the remote is illuminated, and use the remote to control the chair to recline and lift to different



Press here to retract
the footrest and lift up

Press here to lower the chair
and extend the footrest

